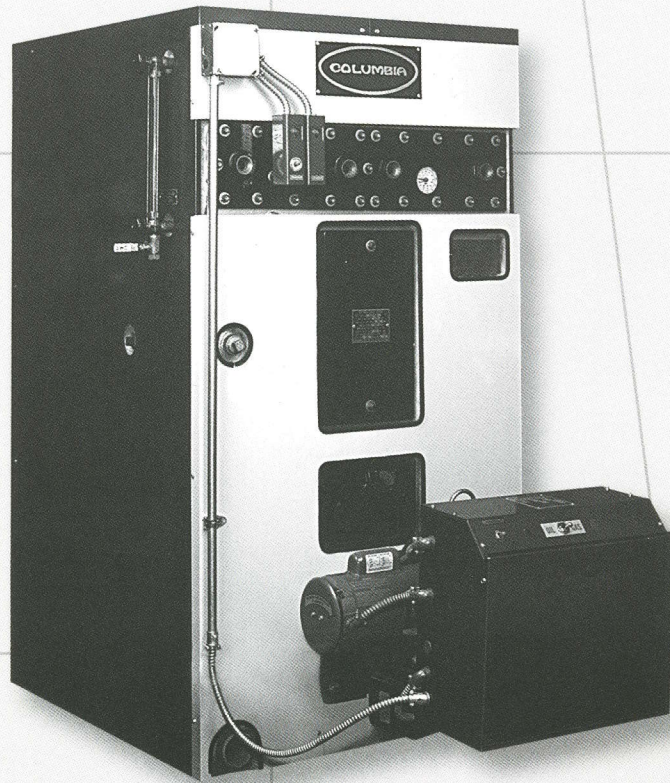


COLUMBIA

CWH SERIES

TANKLESS INDIRECT WATER HEATERS

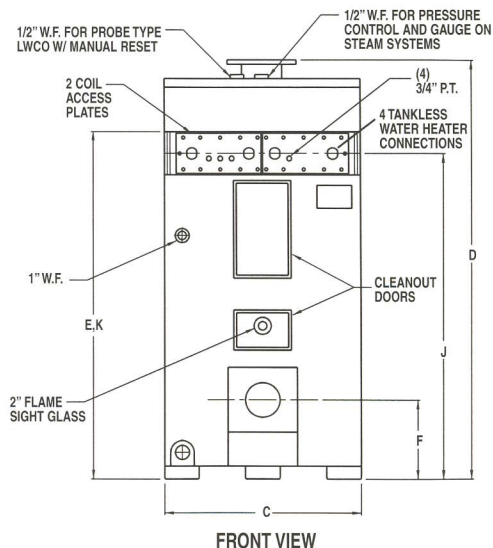
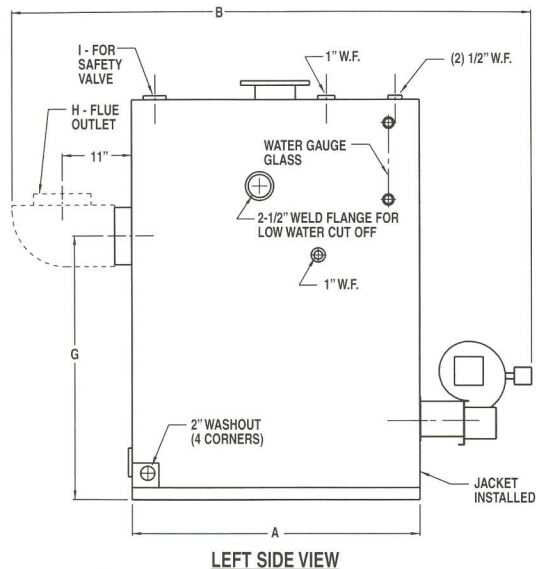
Gas or Oil Fired • Continuous Draw Outputs
from 170 to 2460 gallons of water per hour,
at 100°F rise.



You can do BETTER with Columbia

GOOD people. BETTER Boilers. BEST value.

SPECIFICATIONS AND DATA



| MODEL NO. | CWH 170 | CWH 240 | CWH 300 | CWH 390 | CWH 475 | CWH 610 | CWH 780 | CWH 1200 | CWH 1510 | CWH 1810 | CWH 2460 |
|---|------------------|------------------|------------------|------------------|-------------------|-------------------|-------------------|-------------------|-------------------|-------------------|-------------------|
| RATINGS | | | | | | | | | | | |
| Input --Gals. per hour | 1.40 | 2.00 | 2.40 | 3.00 | 4.00 | 5.00 | 6.00 | 9.00 | 12.00 | 14.00 | 18.00 |
| Input -- MBTU per Hr. | 196 | 280 | 336 | 420 | 560 | 700 | 840 | 1260 | 1680 | 1960 | 2520 |
| Gross Output | 157 | 224 | 269 | 336 | 448 | 560 | 680 | 1014 | 1357 | 1568 | 2054 |
| Horsepower | 4 | 6 | 8 | 10 | 13 | 16 | 20 | 30 | 40 | 47 | 60 |
| Continuous Draw Outputs | | | | | | | | | | | |
| Gals. per minute 80°F Rise* | 3.50 | 5.00 | 6.25 | 8.20 | 9.9 | 12.6 | 16 | 25 | 31 | 38 | 51 |
| Gals. per minute 100°F Rise** | 2.80 | 4.00 | 5.00 | 6.50 | 7.9 | 10.1 | 13 | 20 | 25 | 30 | 41 |
| Gals. per Hr.* | 210 | 300 | 375 | 490 | 595 | 750 | 975 | 1500 | 1890 | 2280 | 3060 |
| Gals. per Hr.** | 170 | 240 | 300 | 390 | 475 | 610 | 780 | 1200 | 1510 | 1810 | 2460 |
| HEATER DIMENSIONS | | | | | | | | | | | |
| A Base Length | 22" | 25" | 27" | 31" | 31" | 35" | 39" | 43" | 51" | 55" | 63" |
| B Length w/Smoke Hood & Burner ⁽¹⁾ | 33" | 36" | 38" | 45" | 45" | 68" | 73" | 76" | 84" | 95" | 104" |
| C Boiler Width | 19" | 19" | 26" | 26" | 30" | 30" | 32" | 34" | 34" | 34" | 40" |
| D Height Overall | 45" | 49" | 53" | 57" | 57" | 60" | 64" | 68" | 74" | 74" | 75" |
| E Min. Safe Water Level | 38" | 43" | 48" | 51" | 48" | 49" | 49" | 49" | 55" | 55" | 55" |
| F Burner Opening to Floor | 8" | 8" | 9" | 9" | 11" | 10" | 12" | 12" | 14" | 14" | 14" |
| G Flue Outlet to Floor | 32" | 37" | 40" | 44" | 42" | 43" | 42" | 41" | 47" | 47" | 47" |
| H Flue Outlet ^(2 & 3 - see note) | 8 ⁽³⁾ | 8 ⁽³⁾ | 9 ⁽³⁾ | 9 ⁽³⁾ | 10 ⁽³⁾ | 10 ⁽³⁾ | 10 ⁽²⁾ | 10 ⁽²⁾ | 12 ⁽²⁾ | 12 ⁽²⁾ | 12 ⁽²⁾ |
| I Safety Valve Opening | 3/4" | 3/4" | 3/4" | 1" | 1-1/4" | 1-1/4" | 1-1/4" | 1-1/4" | 1-1/2" | 1-1/2" | 2" |
| J Coil Connections to Floor | 39" | 43" | 47" | 51" | 50" | 51" | 51" | 51" | 57" | 57" | 57" |
| K Recommended Operating Water Level | 41" | 45" | 49" | 52" | 52" | 55" | 57" | 57" | 63" | 63" | 63" |
| MISCELLANEOUS DIMENSIONS | | | | | | | | | | | |
| Approximate Shipping Weight | 650 | 770 | 1080 | 1260 | 1500 | 1900 | 2100 | 2450 | 2800 | 3000 | 3850 |
| Water Capacity -- Gals. | 24 | 31 | 43 | 55 | 80 | 90 | 133 | 154 | 193 | 214 | 287 |
| Tankless Water Heater Size No. | N6 | #3 | N1 | N7 | N1 | N1 | N2 | N3 | N4 | N4 | N5 |
| Tankless Water Heater Connections | 1" | 1" | 1" | 1" | 1" | 1" | 1" | 1" | 1" | 1" | 1" |
| No. of Tankless Water Heaters | 1 | 1 | 1 | 1 | 2 | 2 | 2 | 2 | 2 | 2 | 2 |
| Header/Mixing Valve Size | 1-1/4" | 1-1/4" | 1-1/4" | 1-1/4" | 1-1/4" | 1-1/2" | 1-1/2" | 2" | 2" | 2" | 2-1/2" |

NOTES: (1) - Standard Oil Burner. (2) Stack need only be vented with CWH-780 through CWH-2460.
 (3) CWH-170 through CWH-610 - chimney required, not pressure fired.

* 80°F Rise -- 40°-120°F
 ** 100°F Rise - 40°-140°F



Manufactured in USA by
COLUMBIA BOILER COMPANY
 P.O. Box 1070, Pottstown, PA 19464
 (610) 323-2700 FAX (610) 323-7292

www.columbiaboiler.com cbcsales@columbiaboiler.com



CONSTRUCTED in accordance with Section IV,
 ASME Boiler & Pressure Vessel Code.